

UNIVERSITY OF KENTUCKY HUMAN DEVELOPMENT INSTITUTE

Visitor guide – MIB basement conference room

The **Mineral Industries Building (MIB)** is a 4-story brick building. It is centrally located on campus just off S. Limestone. MIB is HDI's primary location on campus. The front entrance faces Graham Avenue and is accessible via a ramp. The accessible entrance on the back (southwest) side of the building has a level entry to the elevator lobby.

Note: MIB lacks central air conditioning and relies on window units. Let us know if you have issues with temperature regulation or loud noises.

Parking

Parking at MIB is very limited. There are 12 accessible parking spots surrounding the building, but these are shared with other people on campus and require a UK Parking Permit. There are metered spots nearby, but they are limited to 45 minutes. HDI has a reserved parking space near the back door for visitors.

Finding the room

Enter through the back door of the building (see map below). Take the elevator down to the basement. Turn left when exiting the elevator and look for room 4 on your right.

Photo gallery



Front entrance (faces Graham Ave)



Door to conference room (MIB 004)

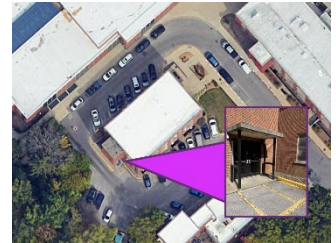


MIB elevator, located just inside rear entrance

Location

Mineral Industries Bldg
120 Graham Avenue
Lexington, KY 40506

[Google Maps link](#)



Aerial view of MIB. The rear entrance is indicated by a pink arrow and there is a photo of the door as well.

[Parking on campus](#)

Wi-Fi access

UK campus Wi-Fi is available at MIB.

Staff & students should connect via eduroam (see [Connecting to eduroam with your linkblue account](#)).

Visitors can connect to UK-Guest (see [connect to UK-Guest using the self-register process](#)).



Human Development
Institute